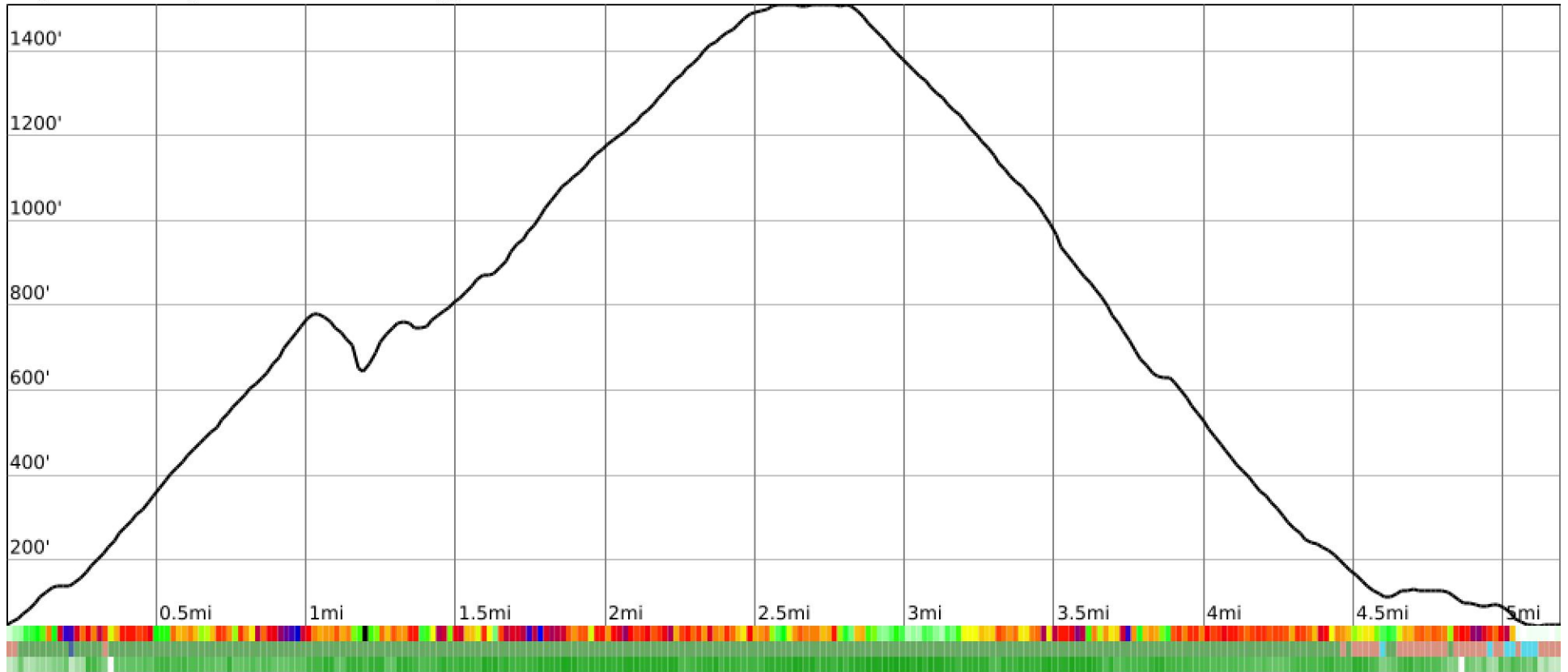


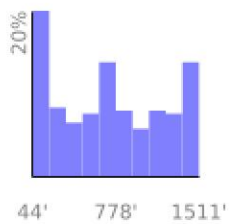
# Measured Profile

range 43' to 1509' gain 1644' loss 1644' exaggeration 7.5x



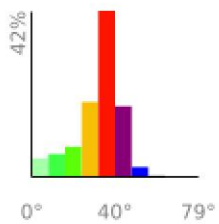
Slope Angle (top), Land Cover (middle), Tree Cover (bottom)

## Elevation



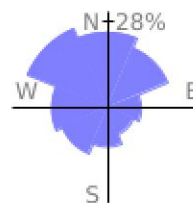
Min 44'  
 Avg 737'  
 Max 1511'  
 Delta 1467'

## Slope

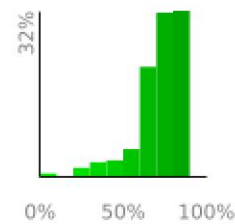


Min 0°  
 Avg 32°  
 Max 79°

## Aspect



## Tree Cover



## Land Cover

Forest 86%  
 Developed 11%  
 Wetland 3%